

Identify Database: Retrieving *Identify* via ShareFile for Local Loading

Ringgold provides access to the Identify Database for local loading via ShareFile. To set you up with access to ShareFile, we will send you an email and this will include a link to ShareFile. By clicking on this link, you will be able to create your own ShareFile password and then access the complete Identify Database.

On the Friday of each week the most up-to-date version of the Identify Database is added to ShareFile. In addition, Ringgold keeps the database loads from the previous four weeks. Note that “220” refers to the current release of the Identify Database.

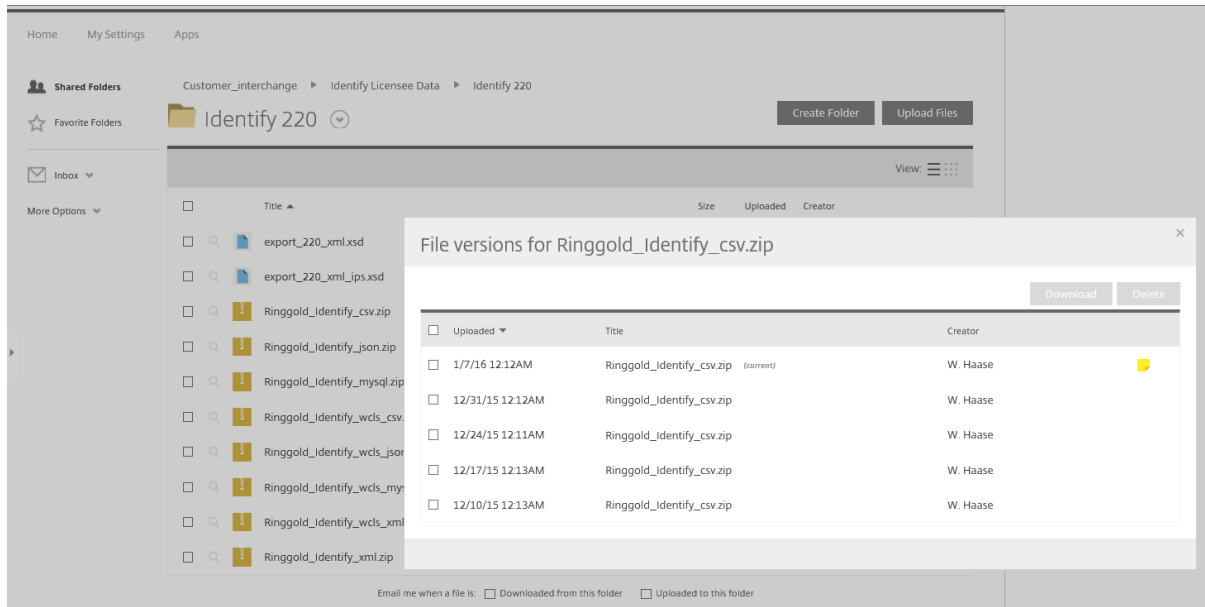
When you access ShareFile in order to download the Identify Database you will see the following folders:

The screenshot shows the ShareFile interface for the 'Identify 220' folder. The breadcrumb path is Customer_interchange > Identify Licensee Data > Identify 220. The folder contains the following files:

Title	Size	Uploaded	Creator
export_220_xml.xsd	10 KB	9/2/15	W. Haase
export_220_xml_ips.xsd	1 KB	9/2/15	W. Haase
Ringgold_Identify_csv.zip	59 MB	1/7/16	W. Haase
Ringgold_Identify_json.zip	69 MB	1/7/16	W. Haase
Ringgold_Identify_mysql.zip	66 MB	1/7/16	W. Haase
Ringgold_Identify_wcls_csv.zip	89 MB	1/7/16	W. Haase
Ringgold_Identify_wcls_json.zip	103 MB	1/7/16	W. Haase
Ringgold_Identify_wcls_mysql.zip	100 MB	1/7/16	W. Haase
Ringgold_Identify_wcls_xml.zip	110 MB	1/7/16	W. Haase
Ringgold_Identify_xml.zip	73 MB	1/7/16	W. Haase

At the bottom of the interface, there are checkboxes for 'Downloaded from this folder' and 'Uploaded to this folder'.

Clicking on the blue boxes on the right-hand side will show that previous versions are available:

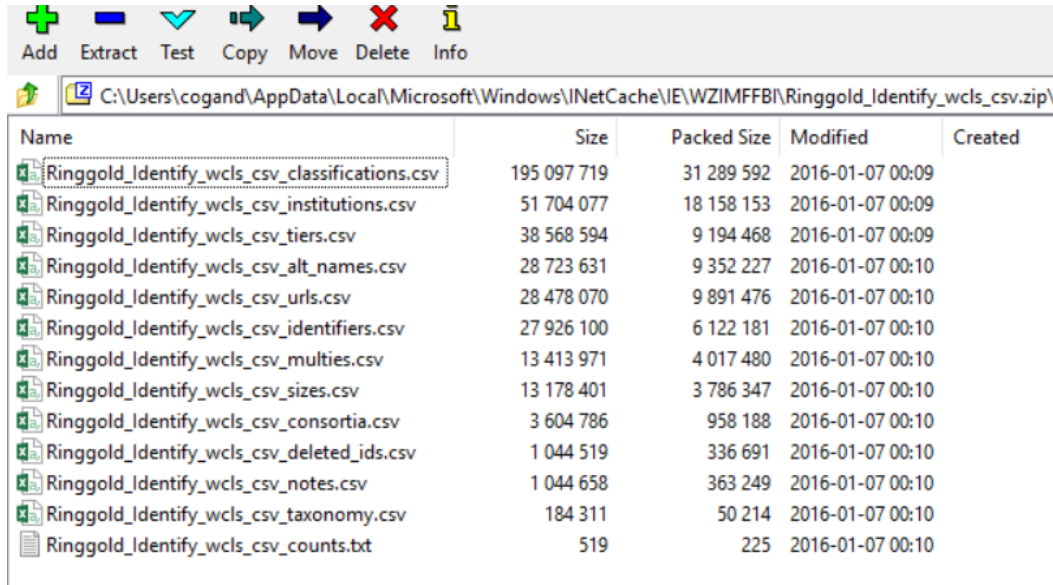


Ringgold includes the Identify Database in a variety of formats so that you can select the format that is best for you: csv, json, mysql and xml. We include the database files in each format with the Academic Classification (wcls) and without this additional file.

When you download the Identify Database files in the format of choice, you will see the following tables. As per our database schema, we show the csv format as an example:

Name	Size	Packed Size	Modified	Created
Ringgold_Identify_csv_institutions.csv	51 704 077	18 158 153	2016-01-07 00:09	
Ringgold_Identify_csv_tiers.csv	38 568 594	9 194 468	2016-01-07 00:09	
Ringgold_Identify_csv_alt_names.csv	28 723 631	9 352 227	2016-01-07 00:09	
Ringgold_Identify_csv_urls.csv	28 478 070	9 891 476	2016-01-07 00:09	
Ringgold_Identify_csv_identifiers.csv	27 926 100	6 122 181	2016-01-07 00:09	
Ringgold_Identify_csv_multies.csv	13 413 971	4 017 480	2016-01-07 00:09	
Ringgold_Identify_csv_sizes.csv	13 178 401	3 786 347	2016-01-07 00:09	
Ringgold_Identify_csv_consortia.csv	3 604 786	958 188	2016-01-07 00:09	
Ringgold_Identify_csv_deleted_ids.csv	1 044 519	336 691	2016-01-07 00:09	
Ringgold_Identify_csv_notes.csv	1 044 658	363 249	2016-01-07 00:09	
Ringgold_Identify_csv_taxonomy.csv	184 311	50 214	2016-01-07 00:10	
Ringgold_Identify_csv_counts.txt	470	207	2016-01-07 00:10	

Or with the Academic Classifications (an extra table is included):



Name	Size	Packed Size	Modified	Created
Ringgold_Identify_wcls_csv_classifications.csv	195 097 719	31 289 592	2016-01-07 00:09	
Ringgold_Identify_wcls_csv_institutions.csv	51 704 077	18 158 153	2016-01-07 00:09	
Ringgold_Identify_wcls_csv_tiers.csv	38 568 594	9 194 468	2016-01-07 00:09	
Ringgold_Identify_wcls_csv_alt_names.csv	28 723 631	9 352 227	2016-01-07 00:10	
Ringgold_Identify_wcls_csv_urls.csv	28 478 070	9 891 476	2016-01-07 00:10	
Ringgold_Identify_wcls_csv_identifiers.csv	27 926 100	6 122 181	2016-01-07 00:10	
Ringgold_Identify_wcls_csv_multies.csv	13 413 971	4 017 480	2016-01-07 00:10	
Ringgold_Identify_wcls_csv_sizes.csv	13 178 401	3 786 347	2016-01-07 00:10	
Ringgold_Identify_wcls_csv_consortia.csv	3 604 786	958 188	2016-01-07 00:10	
Ringgold_Identify_wcls_csv_deleted_ids.csv	1 044 519	336 691	2016-01-07 00:10	
Ringgold_Identify_wcls_csv_notes.csv	1 044 658	363 249	2016-01-07 00:10	
Ringgold_Identify_wcls_csv_taxonomy.csv	184 311	50 214	2016-01-07 00:10	
Ringgold_Identify_wcls_csv_counts.txt	519	225	2016-01-07 00:10	

Please note that if you license IP information, this is provided in a separate ShareFile folder.

Further Assistance

If you require clarification on any aspects of these files, please do not hesitate to contact us. Email your enquiries to Ringgold Customer Support support@ringgold.com.